

Jesus, the Bread of Life

Refrain: *Largo, steady* (♩ = ca. 60)

Je - sus, the bread of life, Je -

sus, the bread of life. All who eat and

drink of him will nev - er die,

will nev - er die. *Fine*

Verses

Cantor



1. I am the Bread that came down from heav - en. I will
 2. All who come to me will not hun - ger nor will
 3. All who love and keep my com - mand - ments will be

Soprano



Alto

Mm

Mm

Tenor



Bass



1. be your food. All who put their
 2. they ev - er thirst. If you turn to
 3. loved by my Fa - ther. And we shall both



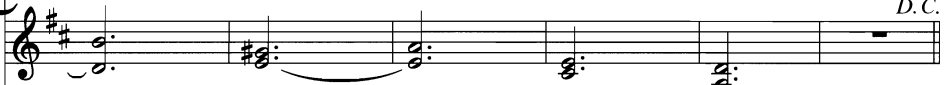
(Mm)

Mm



1. trust in me will nev - er die.
 2. me in faith, I'll nev - er turn a - way.
 3. com - fort them and make our home in them.

D.C.



(Mm)

D.C.

